

# Understanding, Defining & Measuring Scope 3 Travel Emissions



John Pinkard

Associate Director  
JMP Consultants Ltd



# Agenda



- Presentation
- Q&A
- Workshop



# Aim of the project



To provide guidance on measuring scope 3 travel emissions from higher education institutions in England (JMP)

Other elements to the project include procurement (supply chain) and estates (water and waste) scope 3 emissions (ARUP/De Montfort University)

# Objectives

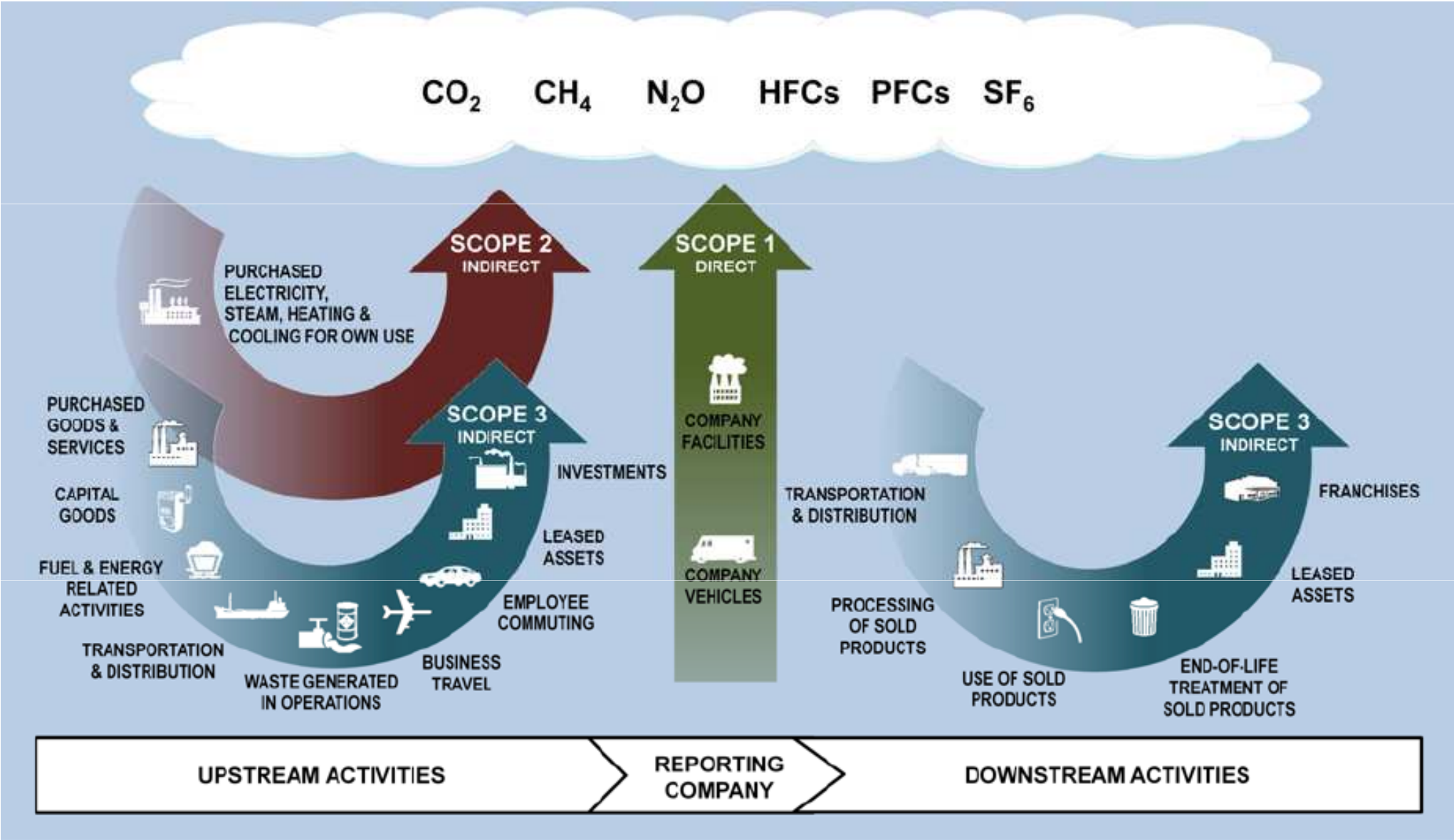


Produce definitions for measuring scope 3 travel emissions at institutional level for use within the estates management statistics from 2012/13

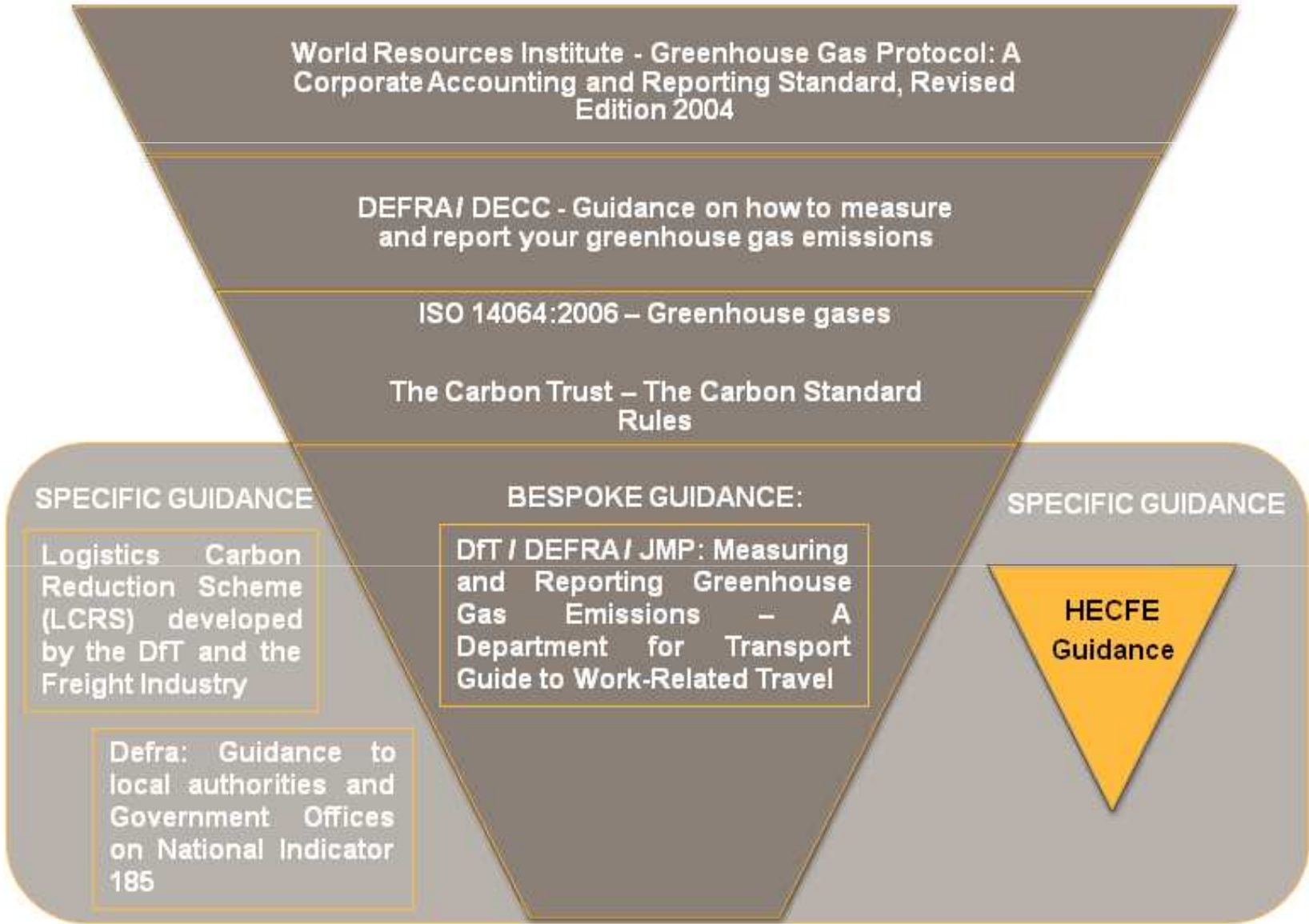
Provide guidance that helps higher education institutions to adopt efficient and effective travel data collection practices



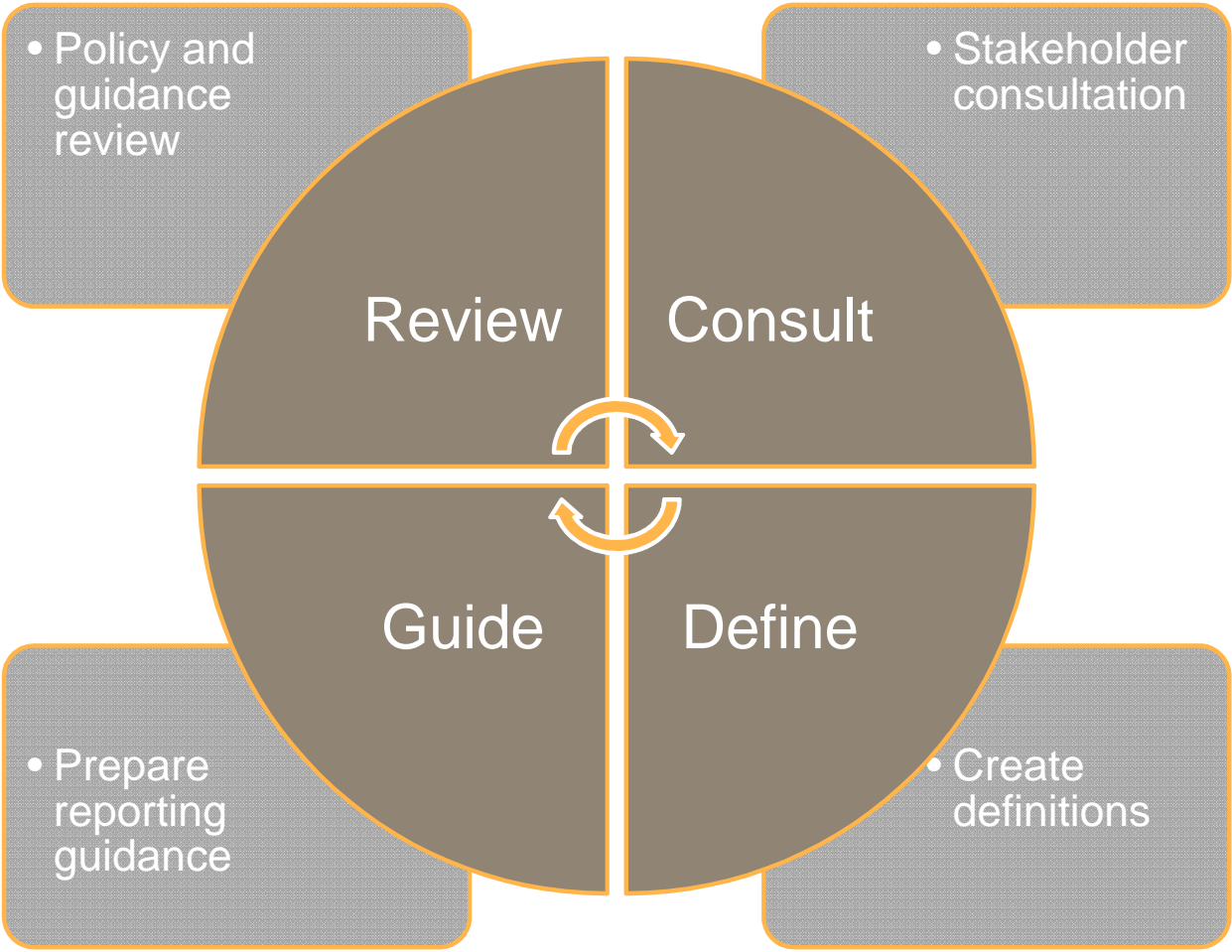
# Background & wider context



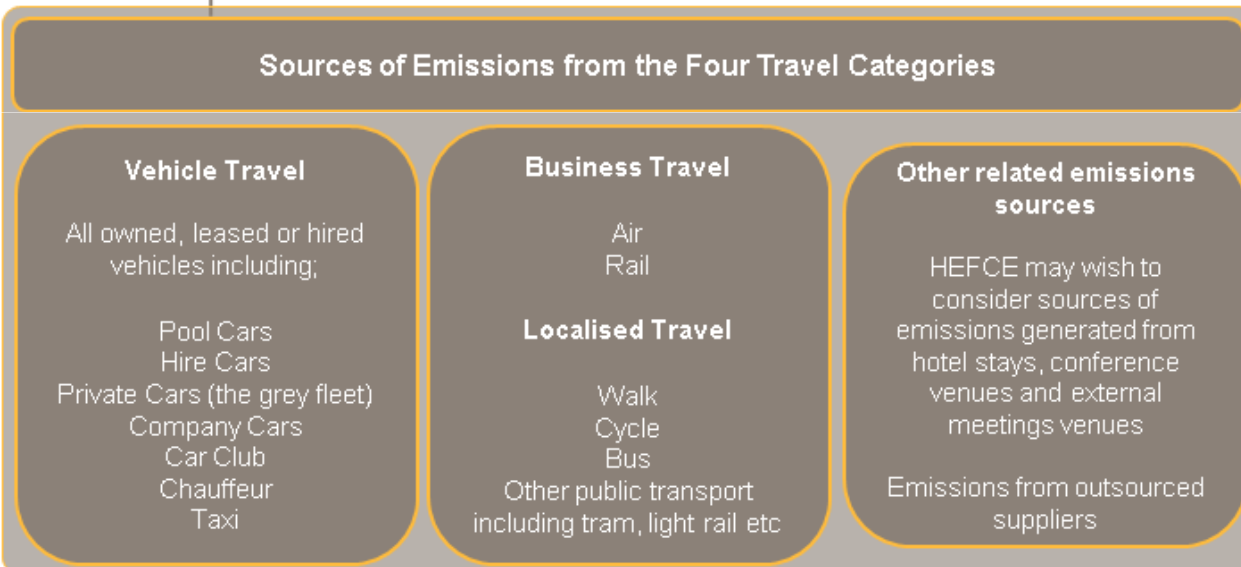
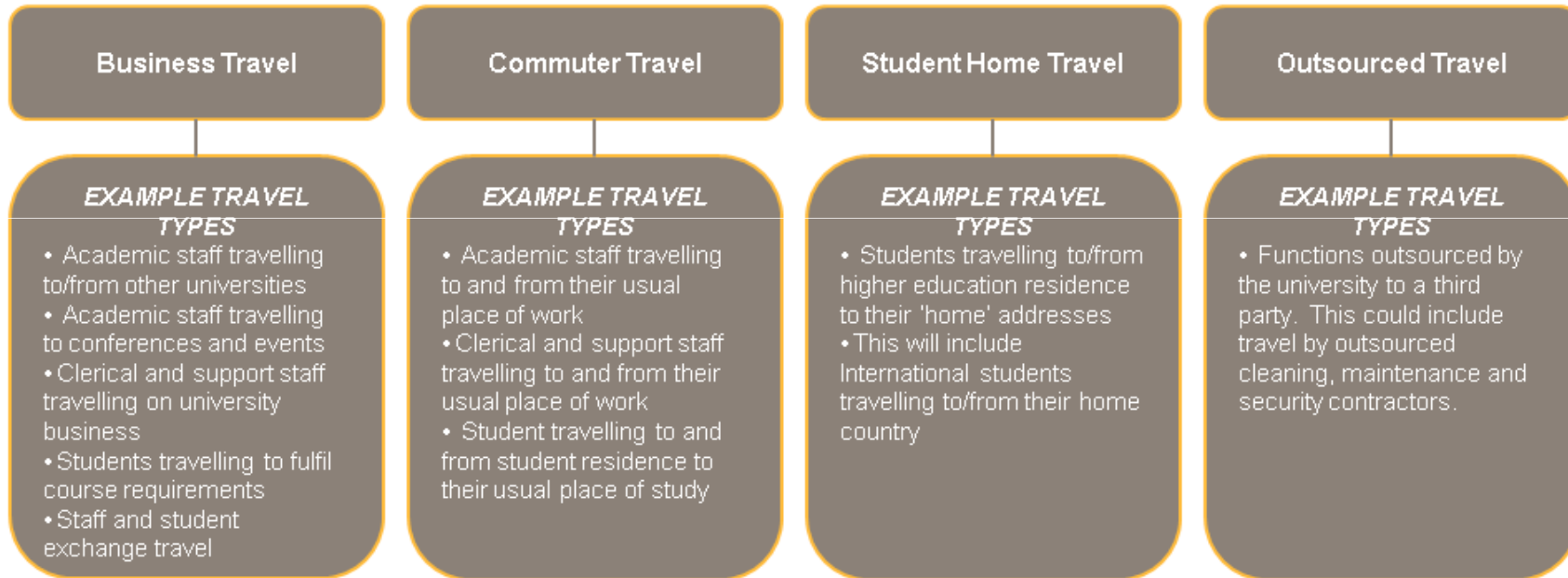
# Background & wider context



# Scope of the project



# Travel emissions – sources





# Travel emissions – key issues & challenges



- Setting the boundary (agreeing the definitions)
- Sourcing the right data
- Applying the right metrics
- Double counting

# Travel emissions – key issues & challenges



Do you know...

- how much you spend on travel?
- the breakdown by mode?
- total travel distance by mode?
- how much fuel you consume?
- the breakdown by fuel type?

# Travel emissions – worked example



Department A spends £100,000 per annum on mileage claims

This equates to 250,000 miles per year

...or 37,500 litres of petrol



# Travel emissions – worked example



250,000 miles x 0.33910 (average petrol car)  
= 84,775 kg CO<sub>2</sub>

37,500 litres x 2.3018 (petrol)  
= 86,318 kg CO<sub>2</sub>



# Summary



## Scope 3 travel emissions

- Definitions for commuter, business and student travel
- Guidance document



# Q&A



## Any questions?



# Workshop – format



Split into 4 groups

Nominate a scribe and speaker

Discuss each question for 5-10 minutes

**Record key findings (top 5 points?)**

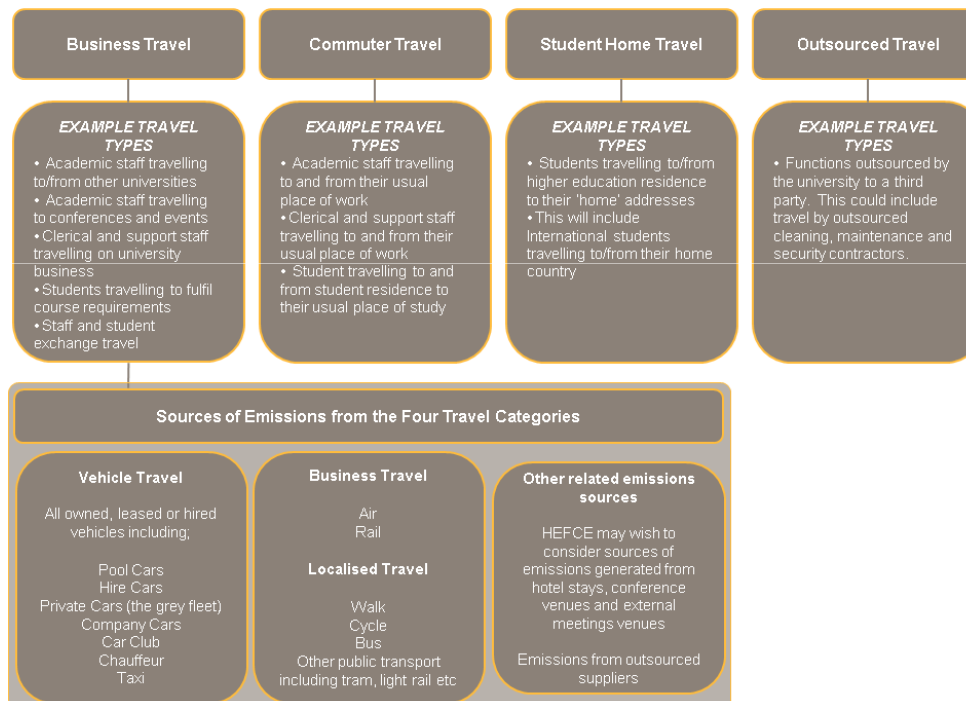
Feed back your findings



# Workshop – questions



## 1. How **relevant** are these categories / sub-categories to the HE Sector?





# Workshop – questions



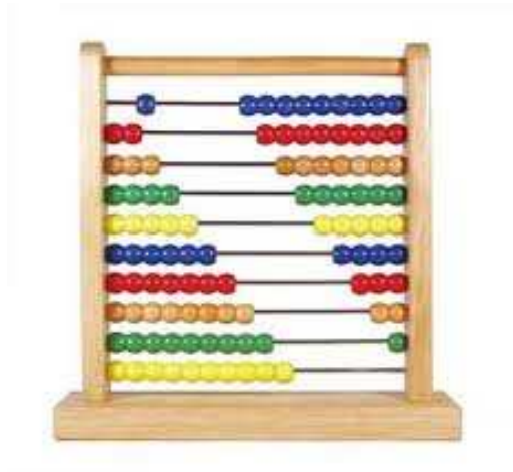
2. How easily can a **complete** and **accurate** data-set be generated?



# Workshop – questions



3. What travel data do you currently collect?



# Workshop – feedback session



Feedback please!



# Contact Details



JMP has been commissioned to provide guidance on measuring **scope 3 travel emissions** from higher education institutions in England. For further details please contact:

John Pinkard  
Associate Director

JMP Consultants Ltd  
85-89 Colmore Row, Birmingham, B3 2BB

[M] 0776 542 6639

[E] [john.pinkard@jmp.co.uk](mailto:john.pinkard@jmp.co.uk)

[F] 0121 230 6011

[W] <http://www.jmp.co.uk>

# Contact Details



A partnership of ARUP/De Montfort University will deliver other elements to the project, which include procurement (supply chain) and estates (water and waste) scope 3 emissions. For further details please contact:

Paul Brockway

Arup

Central Square

Forth Street, Newcastle upon Tyne, NE1 3PL

[T] 0191 261 6080

[E] [paul.brockway@arup.com](mailto:paul.brockway@arup.com)

[F] 0191 261 7879

[W] [www.arup.com](http://www.arup.com)